

KALİTE SÖVE

KALİTE SÖVE, dekoratif polistren dış cephe çözümlerini tasarlama, projelendirme, imal etme, pazarlama, uygulama ve ihrac etme amacıyla Türkiye Antalya'da 2017 de kurulmuştur. Kurucuları uzun senelerini sektörde geçirmiş, becerilerini dayanışma ile konsolide etmiş, tecrübeli ve zeki kadrosuyla inşaat sektöründe kaliteyi ve güvenilirliği ilke edinmiştir. Bu ilke doğrultusunda Türkiye ve Dünya çapında özel ve tüzel şahsiyetlerin çözüm ortağı olmayı hedeflemiştir.

KALİTE SÖVE was established in 2017 in Antalya, Turkey for the purpose of designing, projecting, manufacturing, marketing, implementing and exporting decorative polystyrene facade solutions. The founders have spent long years in the sector, have enriched their skills with solidarity and have adopted the principle of quality and reliability in the construction sector with its experienced and intelligent staff. In line with this principle, it aimed to be a solution partner of private and legal persons in Turkey and worldwide.

KALİTE SÖVE была основана в 2017 году в Анталии, Турция с целью проектирования, проектирования, производства, маркетинга, внедрения и экспорта декоративных полистирольных фасадных решений. Учредители провели долгие годы в этом секторе, обогатили свои навыки солидарностью и приняли принцип качества и надежности в строительном секторе с его опытными и умными сотрудниками. В соответствии с этим принципом он стремился быть партнером по решению частных и юридических лиц в Турции и во всем мире.

تأسست كاليت سوف في عام 2017 في أنطاليا، تركيا لغرض تصميم وإسقاط وتصنيع وتسويق وتنفيذ وتصدير حلول الديكور البوليسترين الواجهة. وقد أمضى المؤسسون سنوات طويلة في هذا القطاع، وقد أثرى مهاراتهم مع التضامن واعتمدوا مبدأ الجودة والموثوقية في قطاع البناء مع موظفيها ذوي الخبرة وذكاء. وتمشيا مع هذا المبدأ، تهدف إلى أن تكون شريكا في حل الأشخاص الخاصين والاعتباريين في تركيا وفي جميع أنحاء العالم.

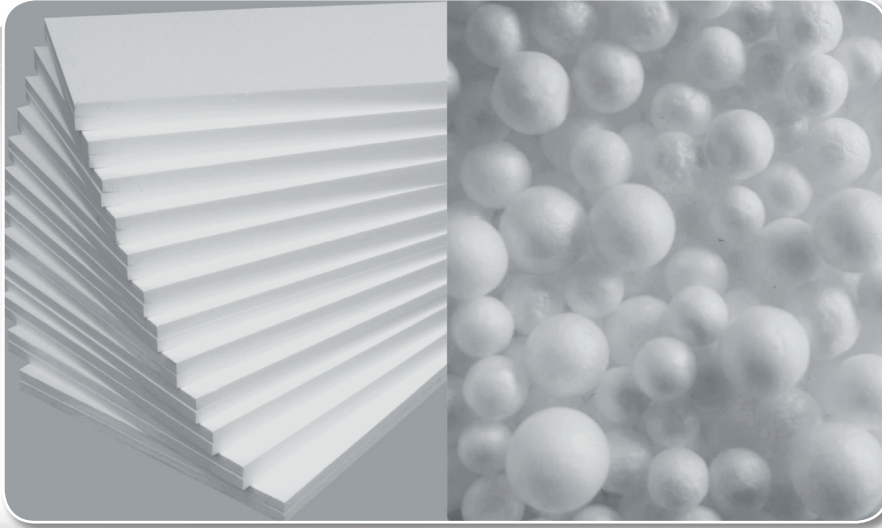


EPS NEDİR?

EPS [EPS-Genleştirilmiş Polistiren Köpük], petrolden elde edilen, köpük halindeki termoplastik, kapalı gözenekli, tipik olarak beyaz renkli ısı yalıtım malzemesidir. Polistiren taneciklerin şişirilmesi ve birbirine kaynaşması ile elde edilen EPS ürünlerde, taneciklerin şişirilmesi ve köpük elde edilmesi için kullanılan şişirici gaz "Pentan" dır. Pentan tanecikler içinde çok sayıda küçük gözeneklerin oluşmasını sağladıktan sonra, üretim sırasında ve üretimi takiben çok kısa sürede hava ile yer değiştirir. Böylece EPS levhaların üzerinde bulunan çok sayıdaki [1 m³ EPS'de 3-6 milyar] küçük kapalı gözenekli hücreler içinde durgun hava hapsolür. Malzemenin %98'i hareketsiz ve kuru havadır. EPS istenilen yoğunluklarda üretilir. Özellikleri istenilen yoğunluğa göre değiştirilebildiğinden malzeme israfına ve gereksiz maliyet artışlarına sebep olmaz. Yalıtım amacıyla genellikle 15-30 kg/m³ yoğunluklarda kullanılan EPS levhaları çok hafiftirler, diğer malzemelerle kaplanarak bitmiş kompozit elemanlar halinde de üretilebilirler. EPS, her aşamada çevre dostu bir üründür; ozon tabakasına zarar vermez, iklim değişikliklerine sebep olmaz, enerji yoğun üretim gerektirmez. büyük oranda geri dönüşümü olan bir malzemedir.

WHAT IS EPS?

EPS [EPS- Expanded Polystyrene] is a heat insulation material obtained from petroleum which is in the state of thermoplastic foam having closed pores and which typically has a white color. In the EPS products, which are obtained by blowing the particles that bind together, the blowing gas, which is used to blow and bind the particles, is "Pentan". After pentan provides the formation of many pores in the particles, it leaves its place to air in a short period of time during the production process and following the production process. Thereby, the inactive air is trapped in the tiny cells, which have closed pores [In 1 m³ of EPS 6 billion]. 98% of the material is inactive and dry air. EPS can be produced in desired intensities. As its properties can be changed according to demand it does not cause the waste of material and unnecessary cost increases. EPS plates; which are mainly used for insulation having the density of 15-30 kg/m³; are very light and by being coated with other materials, they can be produced as finished composite materials. EPS, is an environment friendly material at each stage, it does not harm the ozone layer, it does not cause climate changes, it does not require intense energy consumption, it is highly recyclable.



Polistiren Ham Köpüğün Teknik Detayları ve Yangın Değerleri Technical Details and Fire Values of Polystyrene Raw Foam

Isı iletkenlik hesap değeri	Heat conductivity calculation value	0,035 W/mk	
Zehir içermeyen kloroflorokarbon	Chloro fluoro carbon that does not contain poison	İçermez	It does not contain
Hidrokloroflorokarbon TSEN 13163 [HCFC]	Hydro chloro fouro carbon	İçermez	It does not contain
Buhar difüzyon direnç katsayısı	Steam diffusion resistance coefficient	20-80	
Su emme	Water absorption	Between %0-5	
Mekanik direnç	Mechanical impedance	50-150 kpa (5-15 ton/m) Max	
Yangın sınıfı	Fire classification	In DIN 4102 8-1 alevlenmez.	Nonflammable
Kullanım sıcaklığı	Heat on usage	175 / +185	

SÖVE NEDİR?

Söve, EPS (Genleştirilmiş Polistren) hammaddeden belirli modellere göre kesilmiş profillerin üzerine doğal şartlara dayanıklılık vermek amacıyla özel bir harcın (bazı mineral ve kimyasalların karışımından elde edilmiş kaplama harcı) kaplanıldığı, binalarda ısı yalıtım ve dekorasyon amaçlı kullanılan bir inşaat malzemesidir.

SÖVE PROFİLLERİ KULLANIM AVANTAJLARI

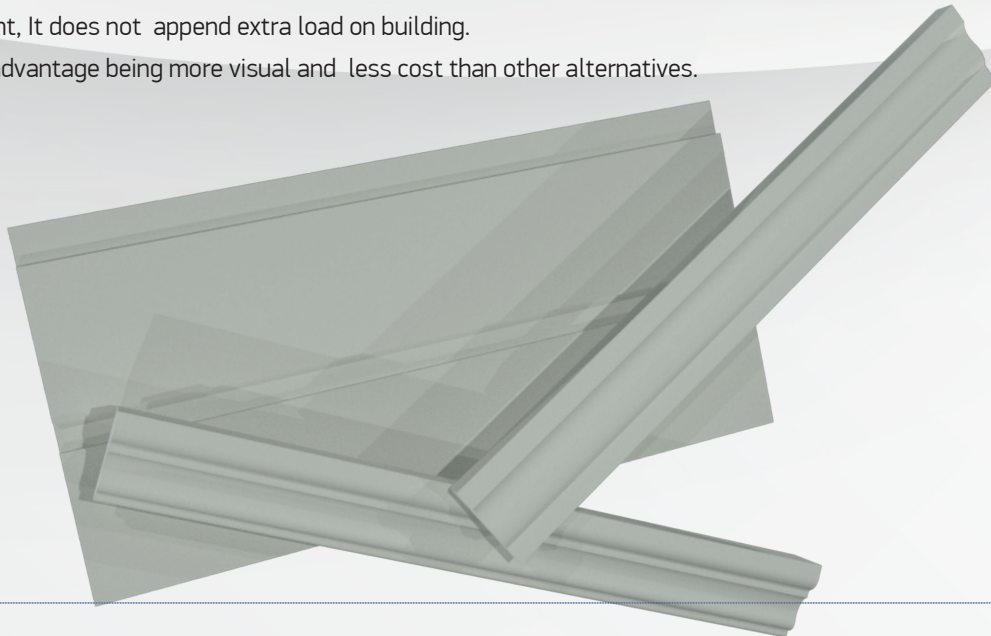
- * Özel ölçülerde üretilebilir,
- * Tüm hava koşullarına dayanıklıdır,
- * Depreme, felaketlere ve bina hareketlerine dirençlidir, su ve nemden etkilenmez,
- * İnsan sağlığına zararsızdır,
- * Doğru uygulama yapıldığında bina ömrüne eşdeğer ömre sahiptir,
- * Süsleme ekipmanları olduğundan görsel duruş çok önemlidir, bina diğer projelere göre daha gösterişli bir hal alır.
- * Son derece hafiftir, binaya ekstra yük bindirmez.
- * Alternatiflerine göre daha ucuz ve daha görseldir.

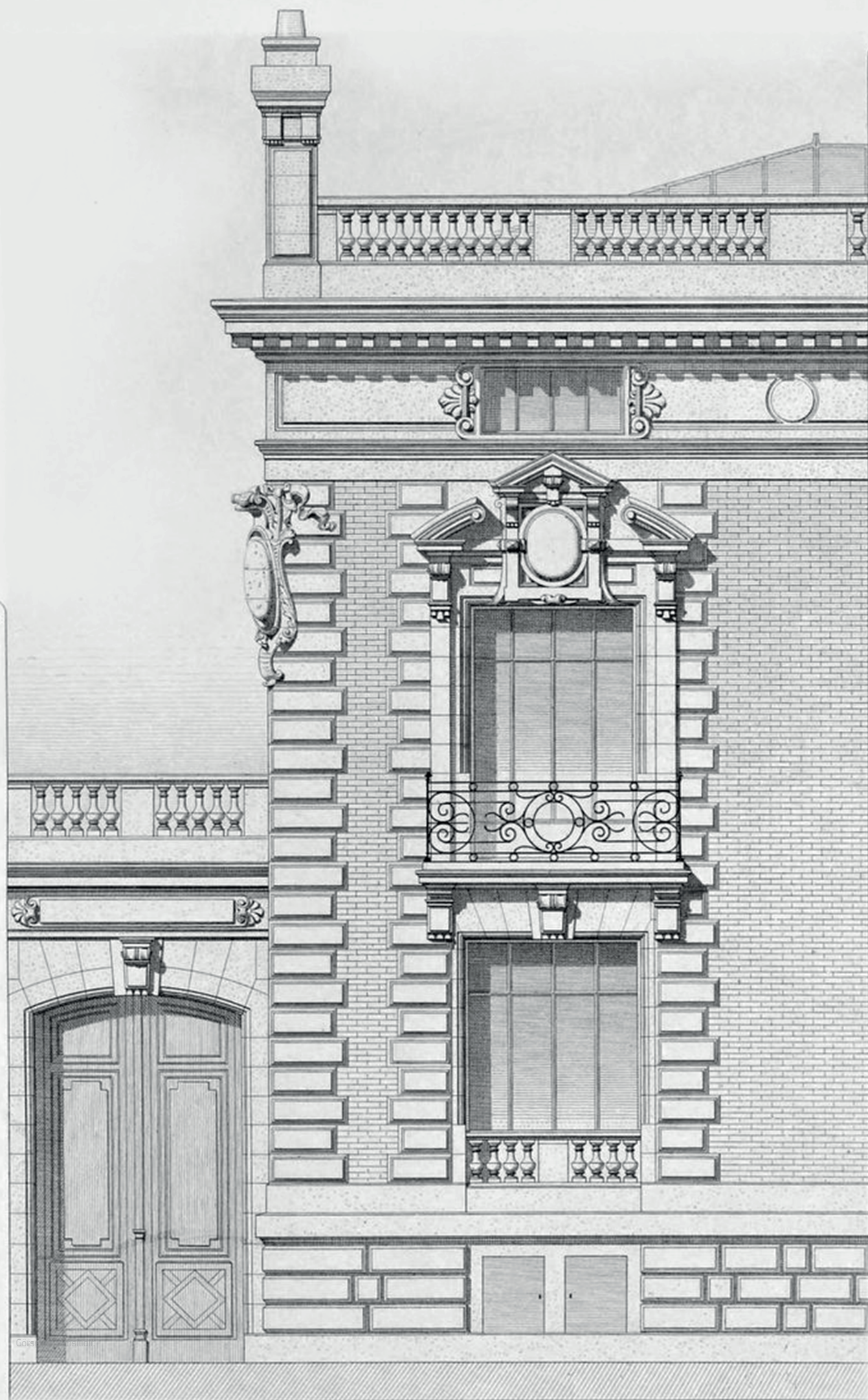
WHAT IS SOVE?

Söve is a construction material which is recruited from expanded polystyrene and coated with a special mixed resin produced from various chemicals and minerals to make it strong against natural conditions. It provides heat insulation and decoration to the buildings.

ADVANTAGES OF USING SOVE PROFILES

- * It is able to produce in requested different measurements.
- * It is strong against all weather conditions.
- * It is strong against earthquakes, disasters and building movements. It is not affected by dust and dump.
- * It has not diseffect on human health.
- * It has a life as long as building's if It has been applicated properly.
- * Visual stand is the most important matter because of the profiles are about decoration, your project will be glorious more than old form.
- * It is light, It does not append extra load on building.
- * It has advantage being more visual and less cost than other alternatives.



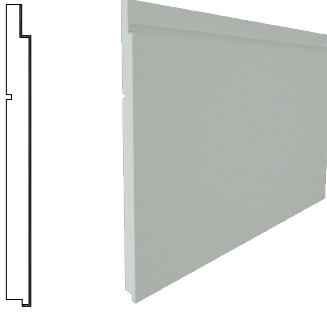


CEPHE KAPLAMALARI

Facade Coating / Фасадное покрытие / الواجهة طلاء

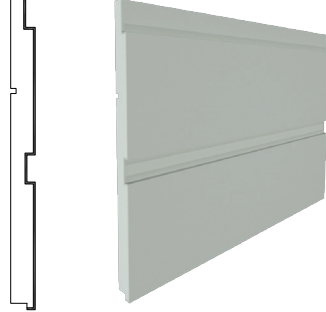
FUGALI 1

50 cm x 200 cm x 3 cm
4 cm
5 cm



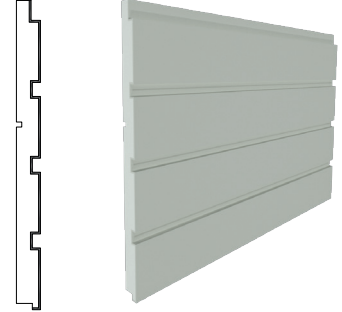
FUGALI 2

50 cm x 200 cm x 3 cm
4 cm
5 cm



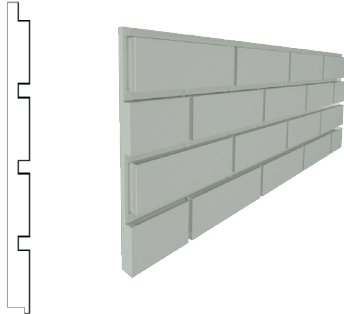
FUGALI 3

50 cm x 200 cm x 3 cm
4 cm
5 cm



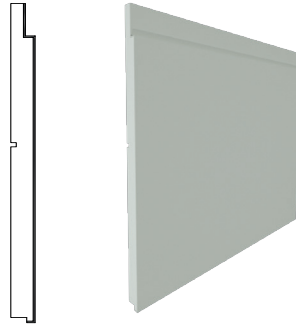
FUGALI 4

50 cm x 200 cm x 3 cm
4 cm
5 cm



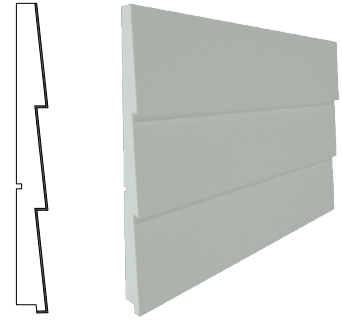
FUGALI 5

50 cm x 200 cm x 4 cm
5 cm



YALIBASKI

50 cm x 200 cm x 4 cm
5 cm



FUGA ÇİTALARI

Coating Groove / Поверхность покрытия / طلاء الأخدود

FÇ 1

200 x 9 x 3 cm



FÇ 2

200 x 9 x 4 cm



FÇ 3

200 x 9 x 5 cm



DEKORATIF CEPHE KAPLAMALARI

Dekorative Facade Coating / Декоративное фасадное покрытие / الزخرفية واجهة طلاء

DCK 1

120x50x3,5 cm



DCK 2

120x50x3,5 cm



DCK 3

120x50x3,5 cm



DCK 4

120x50x3 cm



DCK 5

150x50x3,5 cm



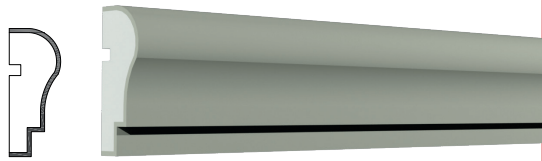
DCK 6

120x50x3 cm

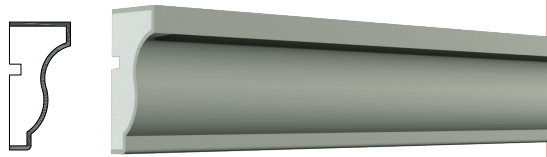


SÖVELER

Window Frames / Рамы оконные / إطارات النوافذ



S-1
200 x 9,5 x 3,8 cm



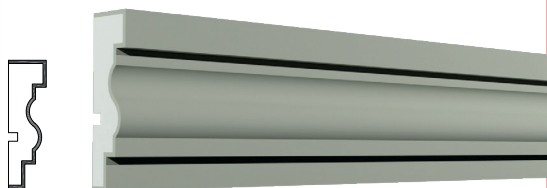
S-2
200 x 9,5 x 4,5 cm



S-3
200 x 10 x 4 cm



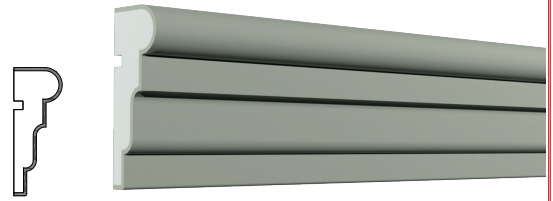
S-4
200 x 12 x 2 cm



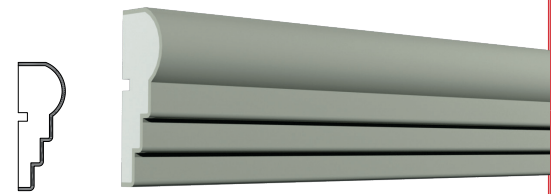
S-5
200 x 12 x 3,5 cm



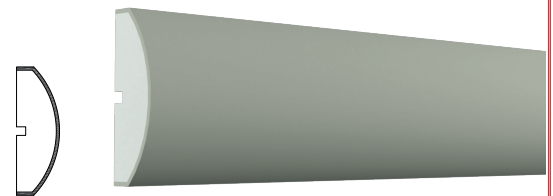
S-6
200 x 12 x 3 cm



S-7
200 x 12 x 4,5 cm



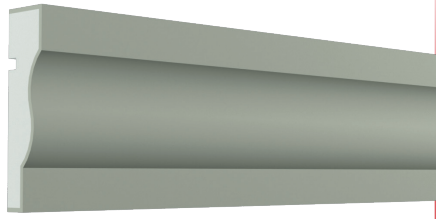
S-8
200 x 12 x 4 cm



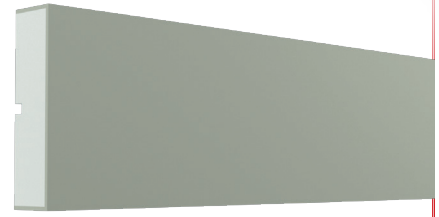
S-9
200 x 12 x 4 cm



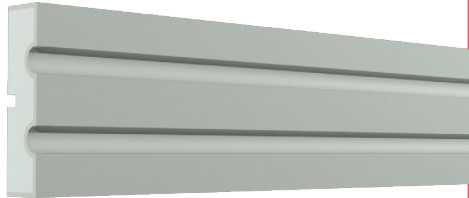
S-10
200 x 12 x 3 cm



S-11
200 x 13,7 x 3,6 cm



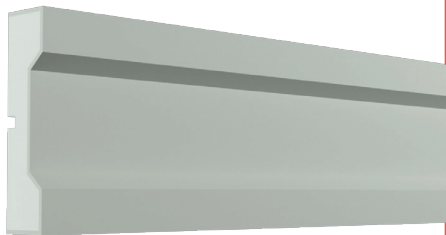
S-16
200 x 15 x 4 cm



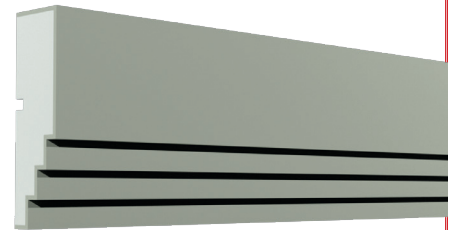
S-12
200 x 12 x 3 cm



S-17
200 x 15 x 4 cm



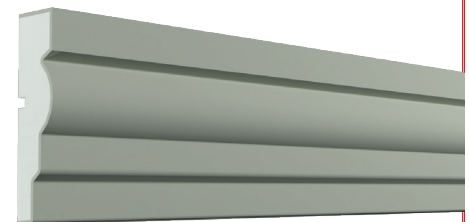
S-13
200 x 15 x 8 cm



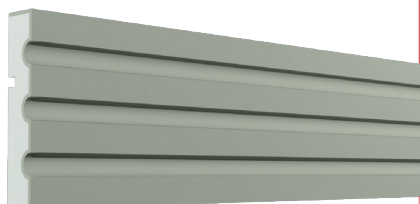
S-18
200 x 15 x 4,5 cm



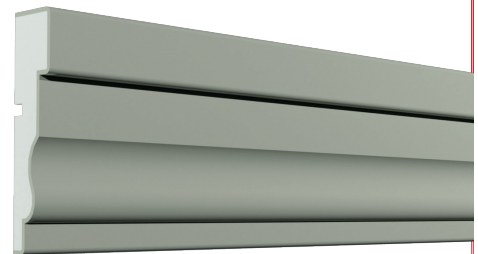
S-14
200 x 15 x 4,5 cm



S-19
200 x 16 x 4 cm



S-15
200 x 15 x 3 cm



S-20
200 x 16 x 3,8 cm



DENİZLİKLER

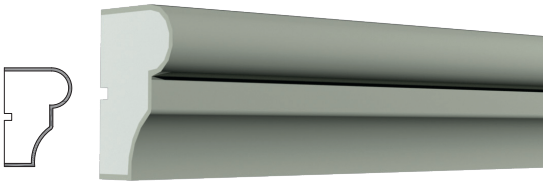
Window Sills / Подоконник / عتبة النافذة



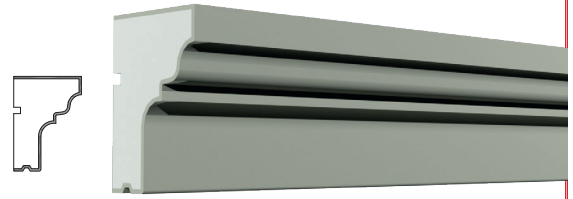
D-1
200x9,5x4,5 cm



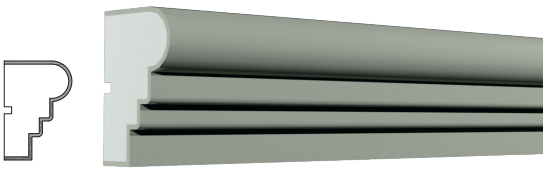
D-6
200x12x8 cm



D-2
200x9,5x6,5 cm



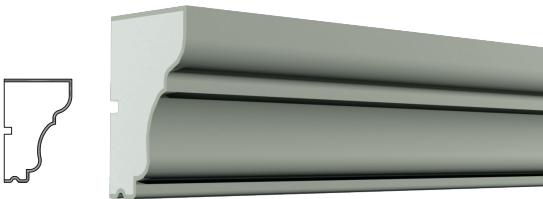
D-7
200x12x8,5 cm



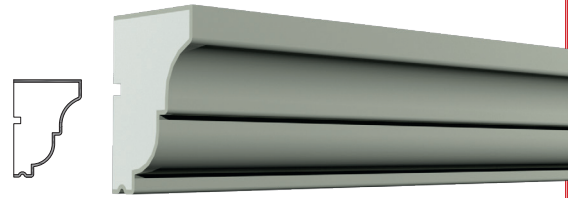
D-3
200x9,5x6,5 cm



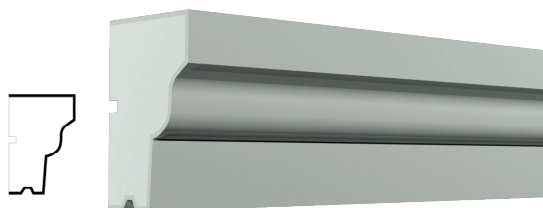
D-8
200x12x9,5 cm



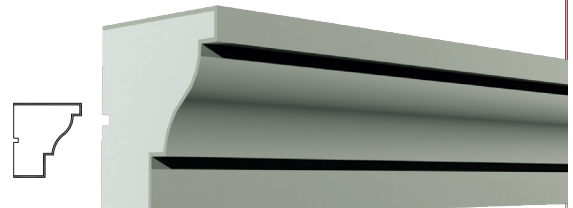
D-4
200x12x7,8 cm



D-9
200x12x8,3 cm



D-5
200x12x8 cm



D-10
200x14x12,5 cm



PENCERE MODELLERİ

Window Styles / Стили окон / أنماط النافذة

Pencere Model 1



Pencere Model 2



Pencere Model 3



Pencere Model 4



Pencere Model 5

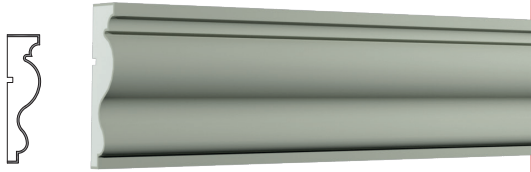


Pencere Model 6



KAT SİLMELER

Cornice / Карниз / الطابق حزام



KS-1

200x20x5 cm



KS-6

200x24,5x4,5 cm



KS-2

200x20x6 cm



KS-7

200x24,5x4,5 cm



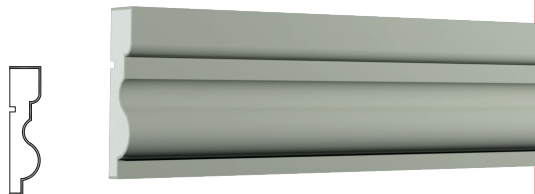
KS-3

200x20x6 cm



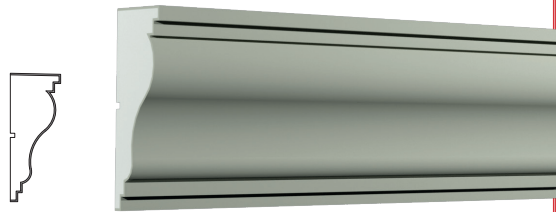
KS-8

200x25x8,5 cm



KS-4

200x20x5 cm



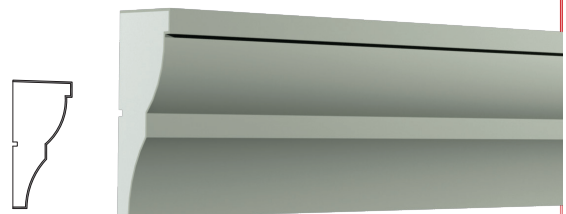
KS-9

200x24,5x9,5 cm



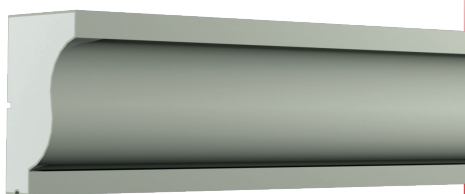
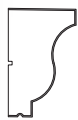
KS-5

200x20x8 cm



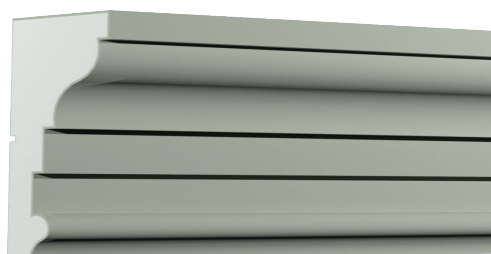
KS-10

200x24,5x11,5 cm



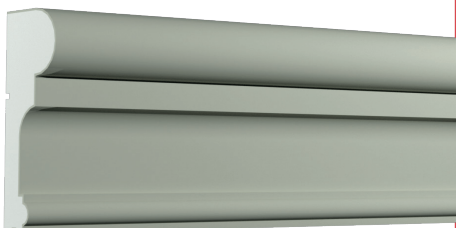
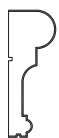
KS-11

200 x 24,5 x 15 cm



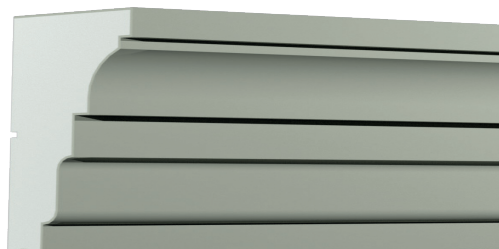
KS-16

200 x 33 x 14 cm



KS-12

200 x 30 x 11 cm



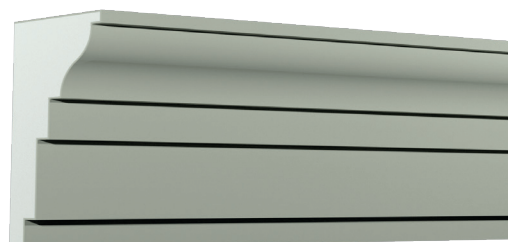
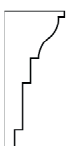
KS-17

200 x 33 x 15,5 cm



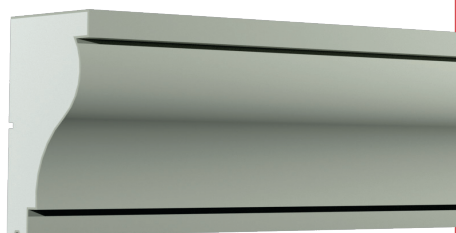
KS-13

200 x 30 x 11 cm



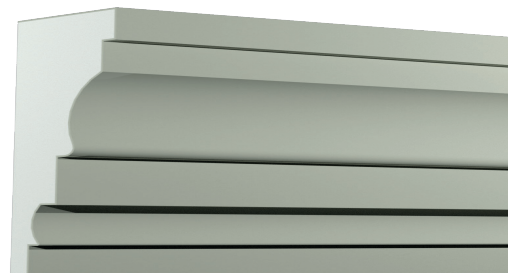
KS-18

200 x 40 x 17,5 cm



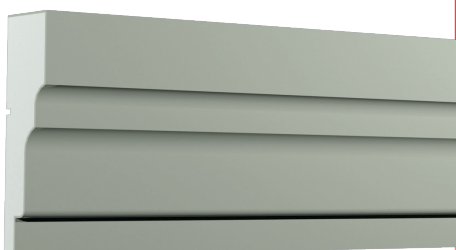
KS-14

200 x 30 x 15 cm



KS-19

200 x 50 x 16 cm



KS-15

200 x 33 x 8 cm



KS-20

200 x 50 x 26 cm

DESENLİ KAT SİLMELER

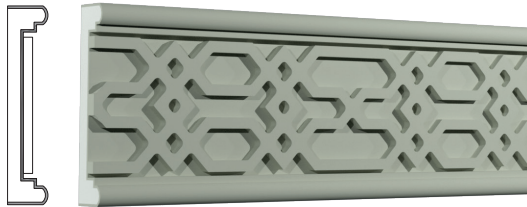
Cornice with Accessories / Карнизы с аксессуарами / الطابق حزام مع الملحقات



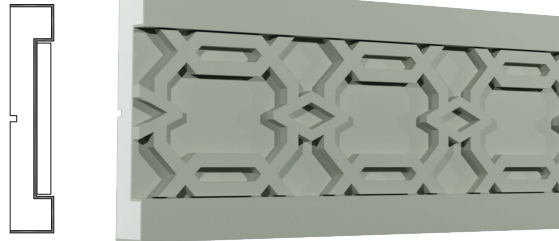
DKS-1
200 x 20 x 4,5 cm



DKS-5
200 x 32 x 5 cm



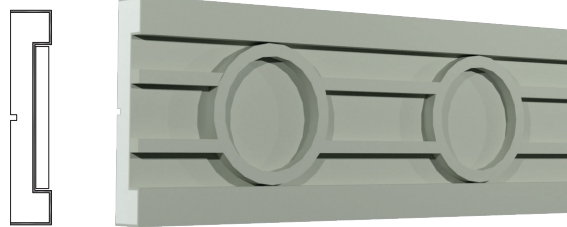
DKS-2
200 x 24 x 5 cm



DKS-6
200 x 30 x 6 cm



DKS-3
200 x 24 x 5 cm



DKS-7
200 x 30 x 6 cm



DKS-4
200 x 24 x 4,5 cm

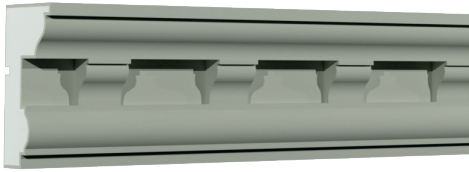


DKS-8
200 x 50 x 8 cm

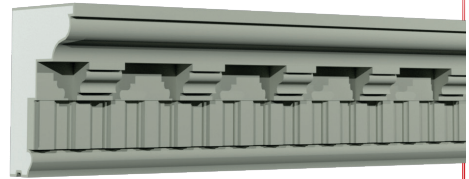
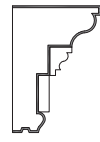
SINIRSIZ MODELLER
ESTETİK KESİTLER



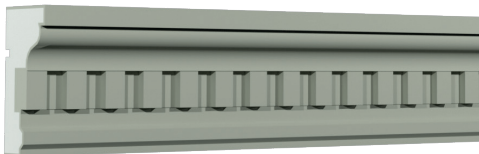
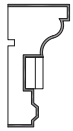
*GÖZE HİTAP EDEN
ÇİZGİLER...*



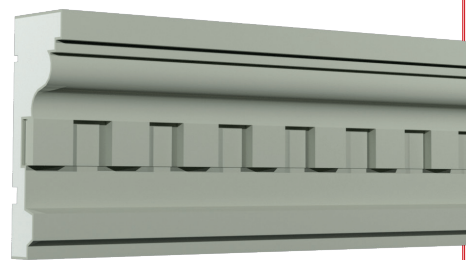
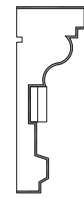
DKS-9
200 x 16 x 8,5 cm



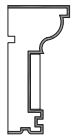
DKS-13
200 x 20 x 14 cm



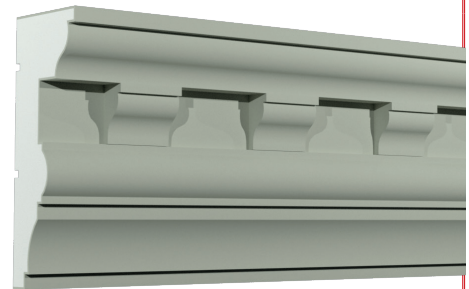
DKS-10
200 x 16 x 8 cm



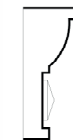
DKS-14
200 x 29 x 11 cm



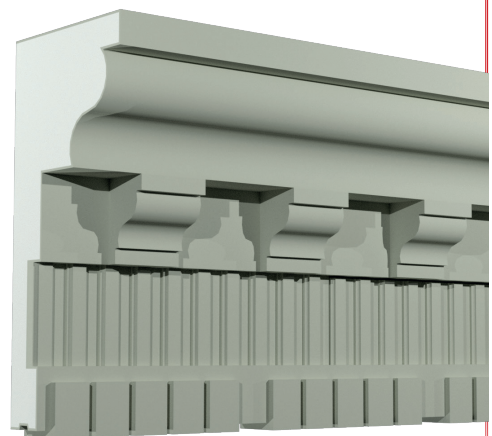
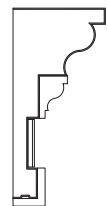
DKS-11
200 x 16 x 7,5 cm



DKS-15
200 x 36 x 14,5 cm



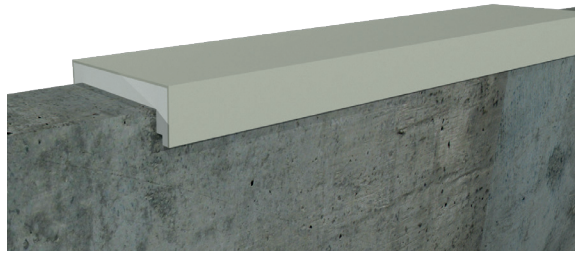
DKS-12
200 x 20 x 8 cm



DKS-16
200 x 50 x 24 cm

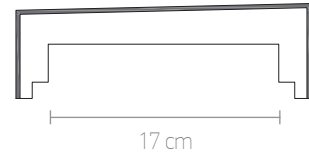
HARPUŞTALAR

COPING / поручень / انشورہ



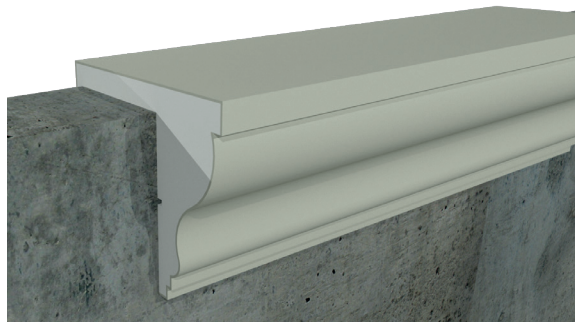
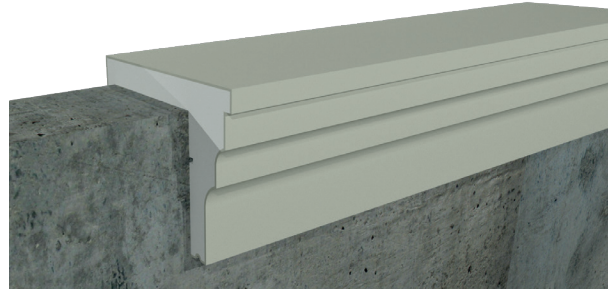
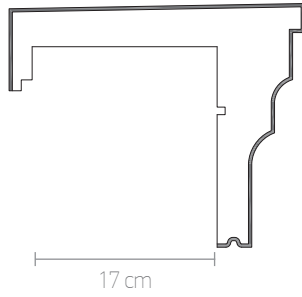
Harpuştalı 1

200 x 22 x 7 cm



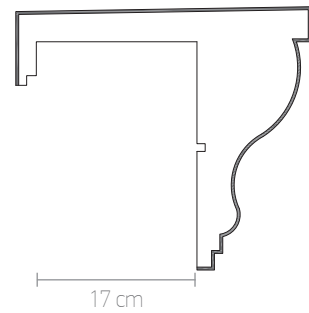
Harpuştalı 2

200 x 27 x 22,5 cm



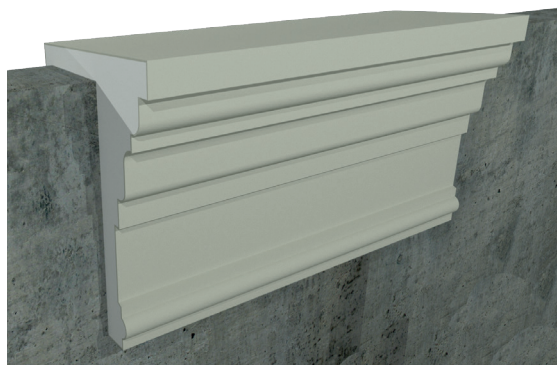
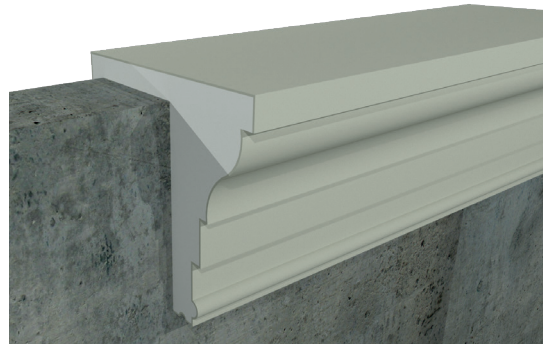
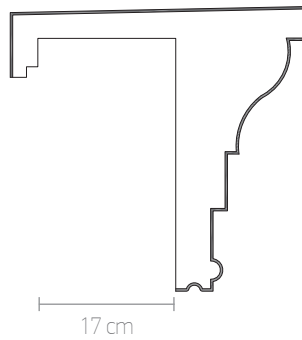
Harpuştalı 3

200 x 30,5 x 27 cm



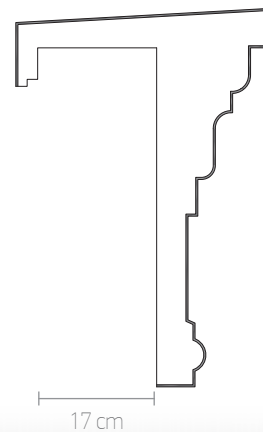
Harpuştalı 4

200 x 36,5 x 35 cm



Harpuştalı 5

200 x 54 x 36 cm

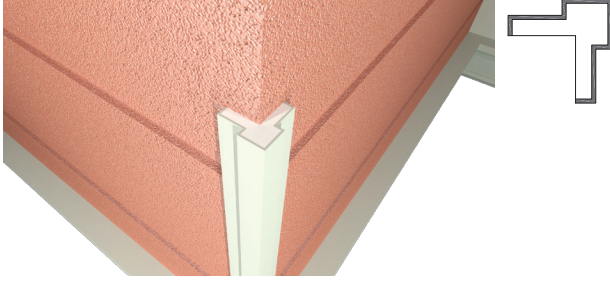




KÖŞE ÇİTALARI

Corner Lath / Угловая планка / الراوية

Köşe Çıta -1



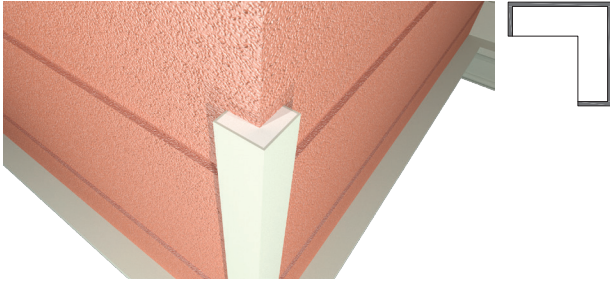
200 x 8 x 8 cm

Köşe Çıta -2



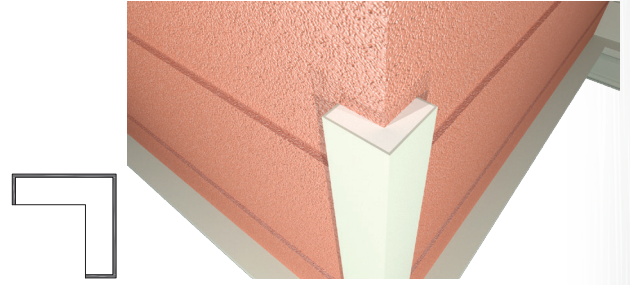
200 x 8,2 x 8,2 cm

Köşe Çıta -3



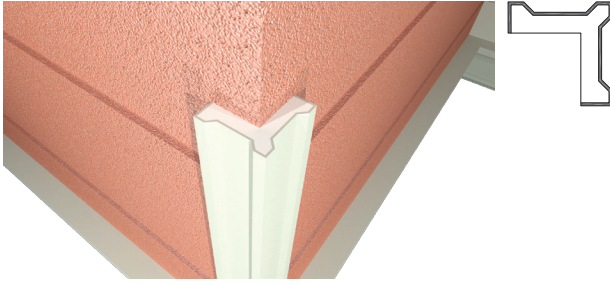
200 x 7,5 x 7,5 cm

Köşe Çıta -4



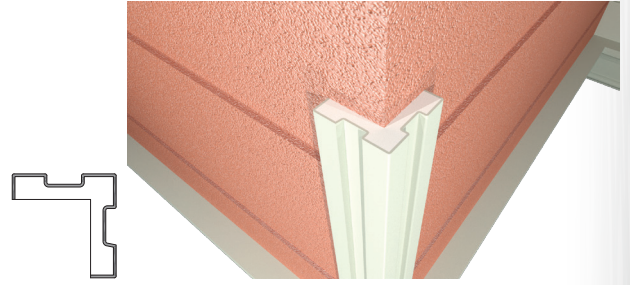
200 x 10 x 10 cm

Köşe Çıta -5



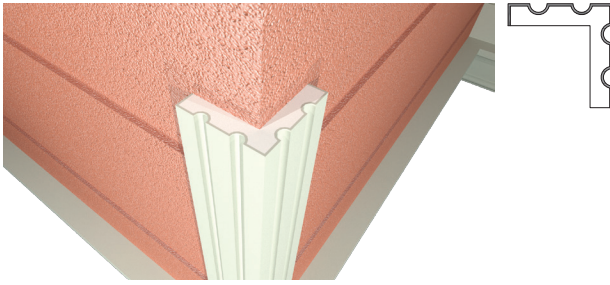
200 x 10,5 x 10,5 cm

Köşe Çıta -6



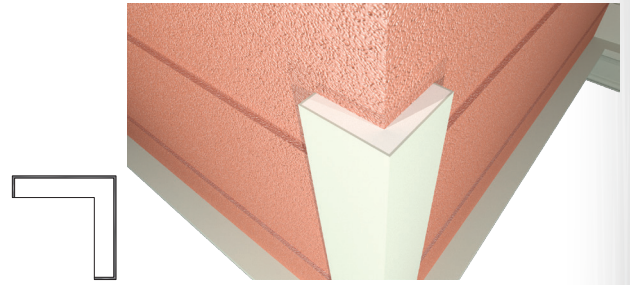
200 x 11,5 x 11,5 cm

Köşe Çıta -7



200 x 14 x 14 cm

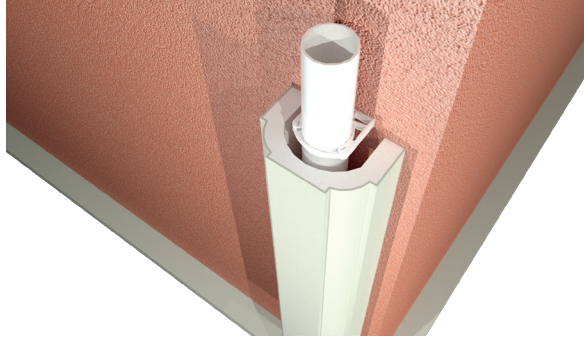
Köşe Çıta -8



200 x 14 x 14 cm

BORU GİZLEME

Pipe Concealment / Сопряжение труб / أنابيب الإخفاء

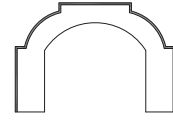


BG-1



200 x 20 x 12,5 cm
İç 13 x 10 (70'lik)

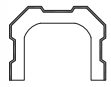
BG-2



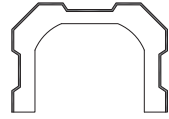
200 x 25 x 17 cm
İç 15,5 x 13,5 (100'lik)

BG-4

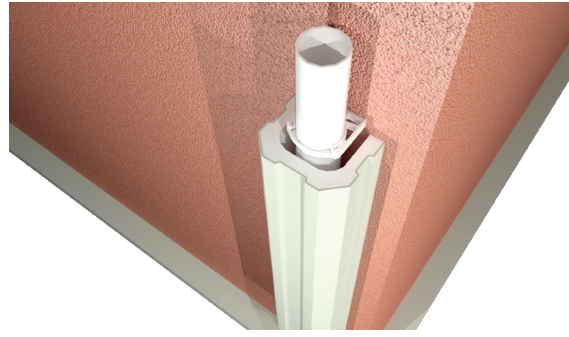
BG-3



200 x 16,5 x 12,5 cm
İç 11 x 9,5 (70'lik)

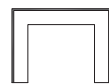


200 x 23,5 x 17 cm
16,5 x 13,3 (100'lik)

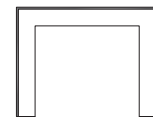
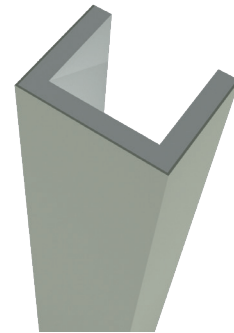


BG-6

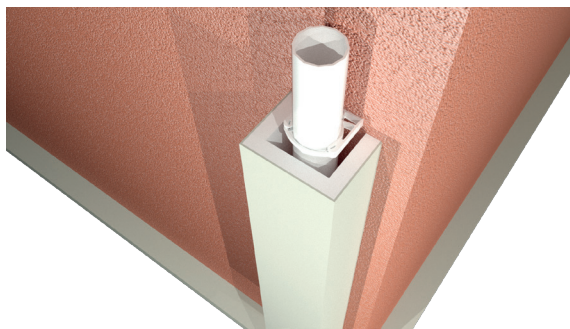
BG-5



200 x 17 x 12,5 cm
İç 11 x 9,5 (70'lik)



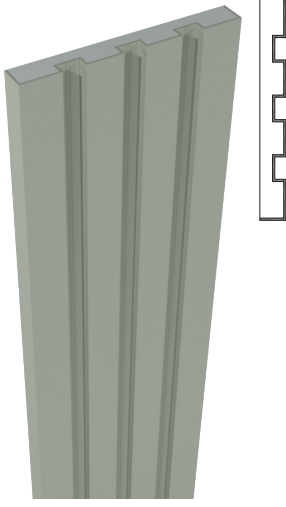
200 x 22 x 17 cm
İç 16 x 14 (100'lik)



SÜTUNLAR

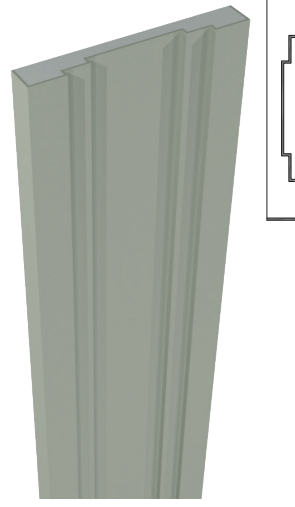
Column / колонка / عمود

STN-1



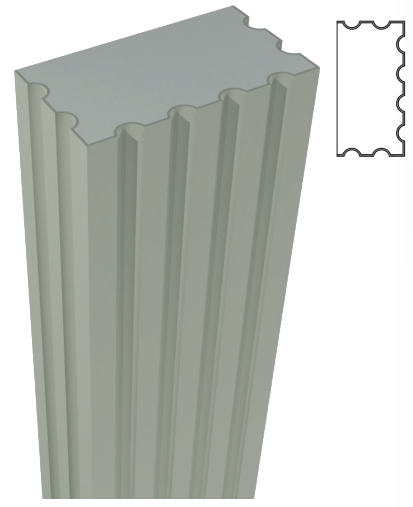
200 x 30 x 3,5 cm

STN-2



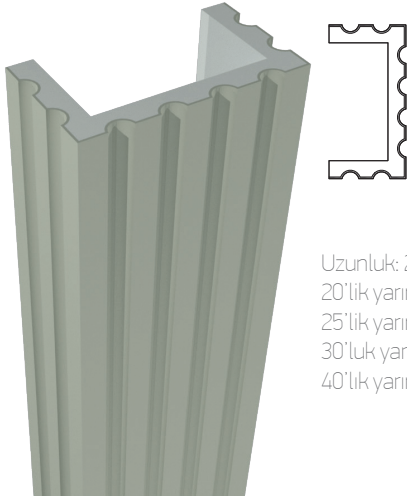
200 x 30 x 4 cm

STN-3



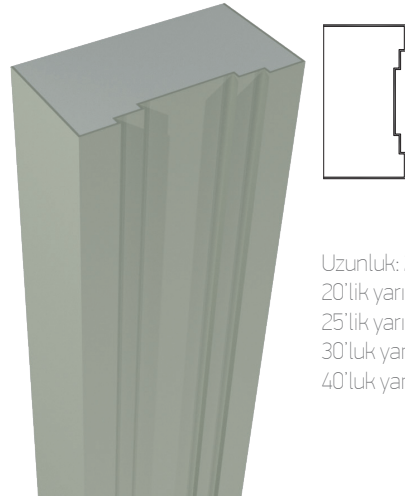
Uzunluk: 200 cm
20'lik yarım (20 x 10 cm)
25'lik yarım (25 x 12,5 cm)
30'luk yarım (30 x 15 cm)
40'lik yarım (40 x 20 cm)

STN-4

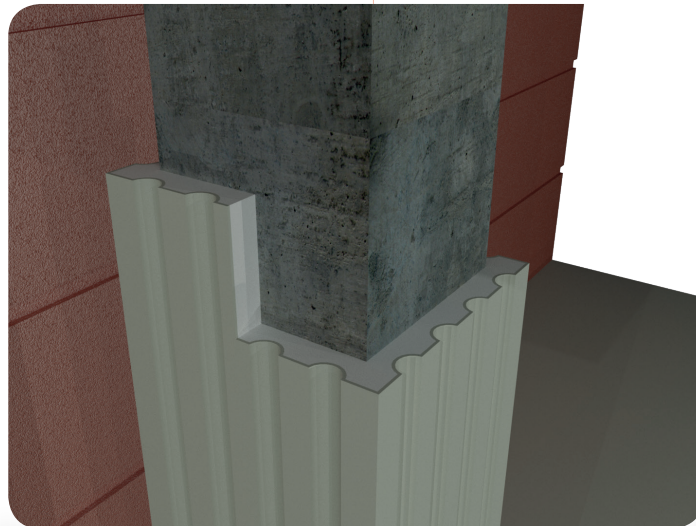


Uzunluk: 200 cm
20'lik yarım (20 x 10 cm)
25'lik yarım (25 x 12,5 cm)
30'luk yarım (30 x 15 cm)
40'lik yarım (40 x 20 cm)

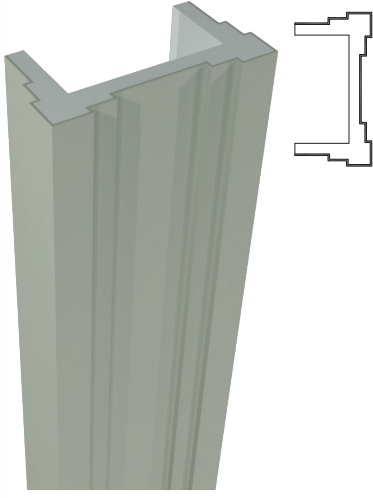
STN-5



Uzunluk: 200 cm
20'lik yarım (20 x 10 cm)
25'lik yarım (25 x 12,5 cm)
30'luk yarım (30 x 15 cm)
40'lik yarım (40 x 20 cm)

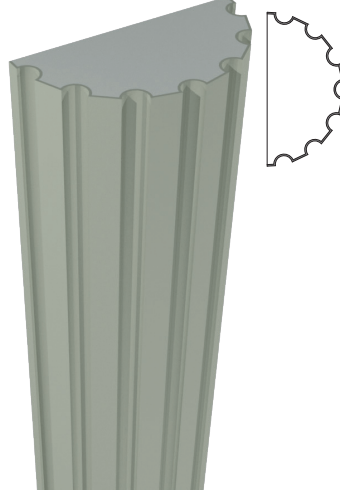


STN-6



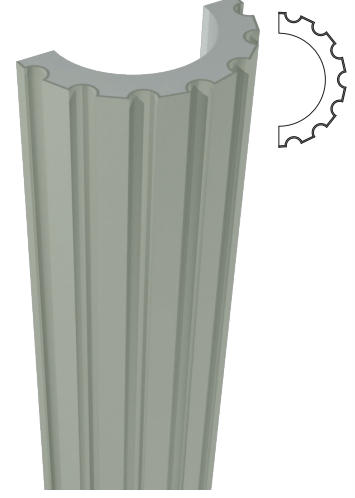
Uzunluk: 200 cm
20 çap yarım (21,5 x 12 cm)
25 çap yarım (27 x 13,5 cm)
30 çap yarım (30 x 16,5 cm)
40 çap yarım (40 x 20 cm)

STN-7



Uzunluk: 200 cm
20 çap yarım (20 x 10 cm)
25 çap yarım (25 x 12,5 cm)
30 çap yarım (30 x 15 cm)
40 çap yarım (40 x 20 cm)

STN-8



Uzunluk: 200 cm
20 çap yarım (20 x 10 cm)
25 çap yarım (25 x 12,5 cm)
30 çap yarım (30 x 15 cm)
40 çap yarım (40 x 20 cm)

STN-9



Uzunluk: 200 cm
20 çap yarım (20 x 10 cm)
25 çap yarım (25 x 12,5 cm)
30 çap yarım (30 x 15 cm)
40 çap yarım (40 x 20 cm)
50 çap yarım (50 x 25 cm)

STN-10



Uzunluk: 200 cm
20 çap yarım (20 x 10 cm)
25 çap yarım (25 x 12,5 cm)
30 çap yarım (30 x 15 cm)
40 çap yarım (40 x 20 cm)
50 çap yarım (50 x 25 cm)





PAYANDA

Buttress / подпирать / مرسد

PY-1



50 x 26 x 20 cm

PY-2



50 x 23 x 20 cm

PY-3



50 x 33,5 x 15 cm

PY-4



60 x 43 x 20 cm

PY-5



60 x 32 x 15 cm

PY-6



55 x 33,5 x 20 cm

PY-7



30 x 23,5 x 12 cm

PY-8



30 x 20 x 12 cm

PY-9



100 x 60 x 40 cm

PY-10



60 x 45,5 x 35 cm

PY-11



60 x 25 x 40 cm

PY-12



30 x 15 x 18 cm

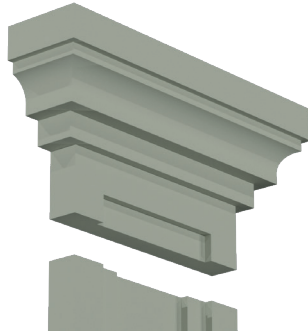
KAİDELER

Cap & Base / Кепка & База / قاعدة & قاعدة

KD-1



KD-2



KD-3



KD-4



KD-5



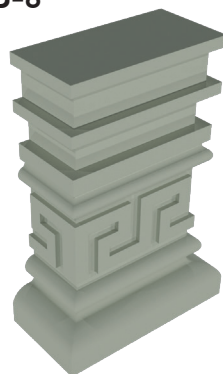
KD-6



KD-7



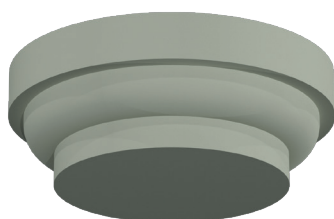
KD-8



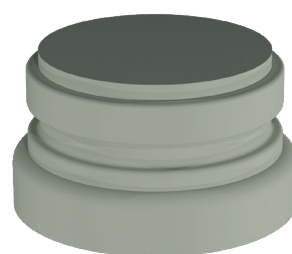
KD-9



KD-10



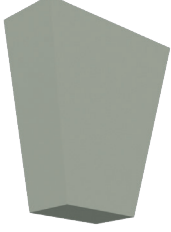
KD-11



KİLİT TAŞLARI

Key Stone / Ключевой камень / حجر الأساس

KT-1



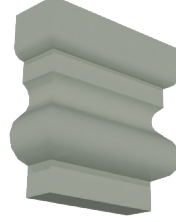
18 x 19,5 x 7,5 cm

KT-2



18,5 x 18,5 x 6 cm

KT-3



21 x 18,5 x 6,5 cm

KT-4



15 x 15 x 5,5 cm

KT-5



20 x 15 x 7,5 cm

KT-6



18 x 19,5 x 8,5 cm

KT-7



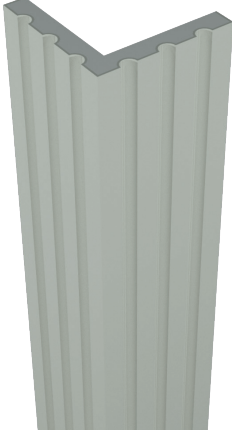
40 x 15 x 5,5 cm



KÖŞE PROFİLLERİ

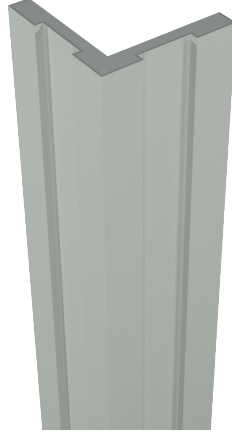
Corner Profile / Угловой профиль / ركن الملف الشخصي

KP-1



200 x 22 x 22 x 3,5 cm

KP-2



200 x 22 x 22 x 3,5 cm

KP-3



200 x 22 x 22 x 3,5 cm

KP-4



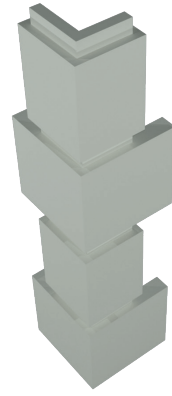
100 x 24 x 24 x 3 cm

KP-5



100 x 24 x 24 x 3 cm

KP-6



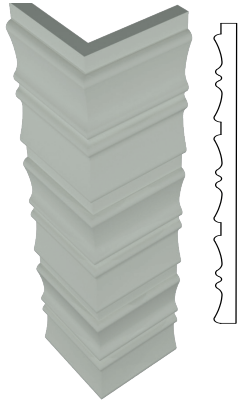
100 x 24 x 24 x 3 cm

KP-7



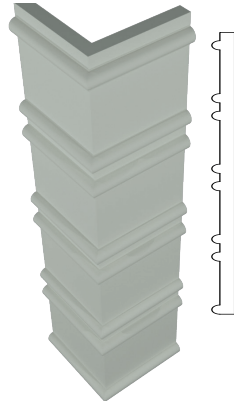
100 x 24 x 24 x 3 cm

KP-8



100 x 24 x 24 x 3 cm

KP-9

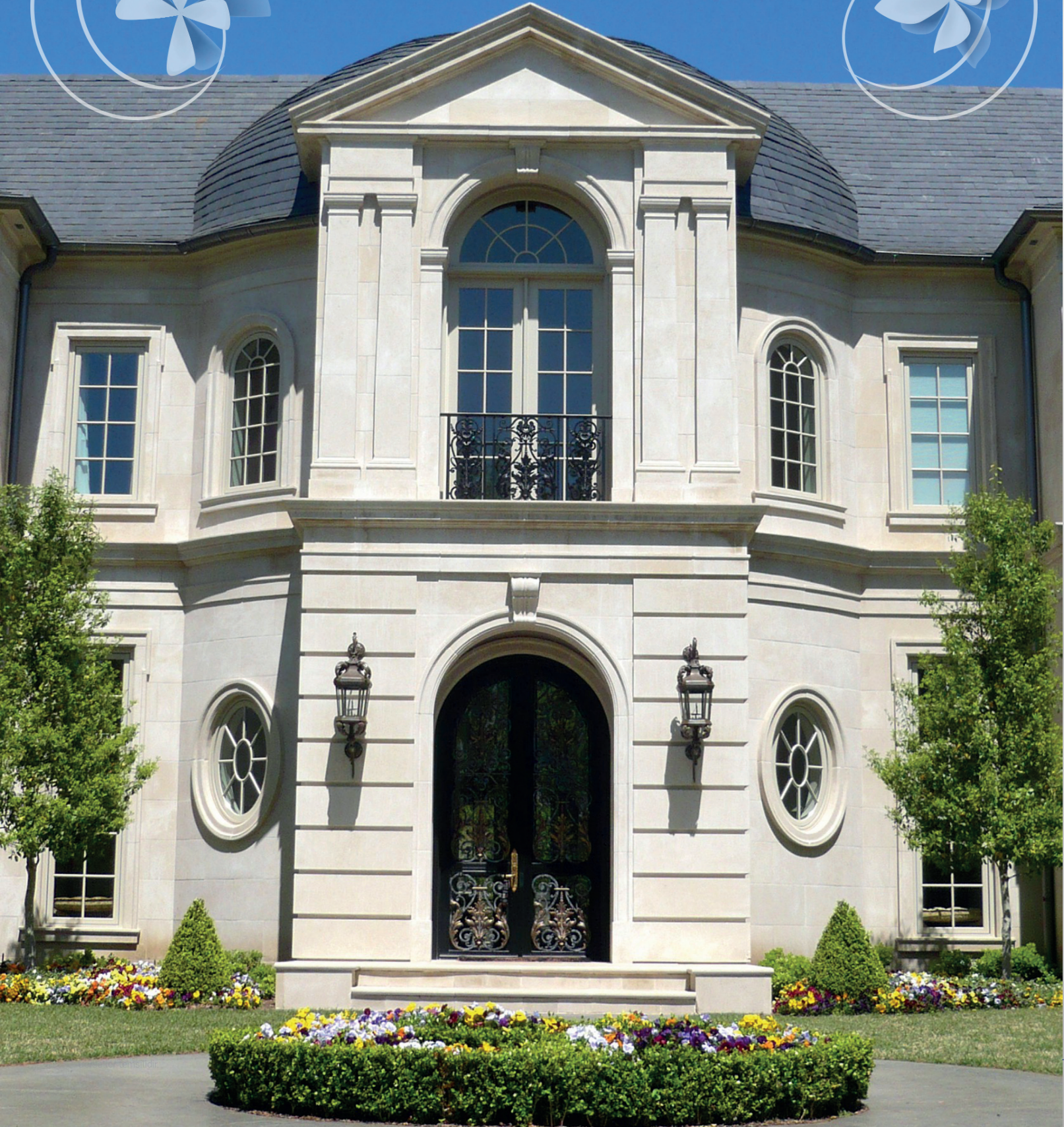


100 x 24 x 24 x 3 cm

KP-10



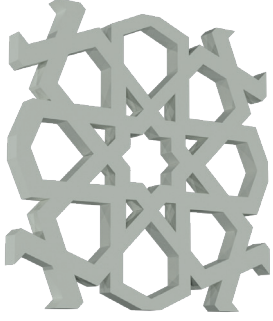
100 x 24,5 x 8 cm



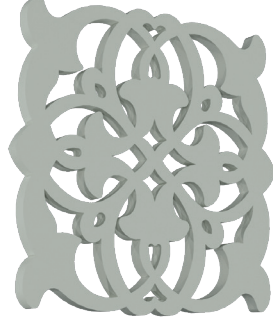
MOTİFLER VE DESENLER

Pattern / Шаблон / نمط

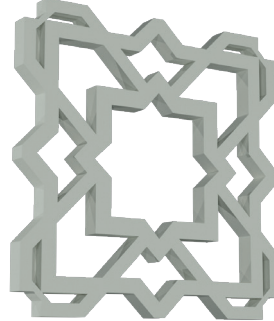
Motif - 1



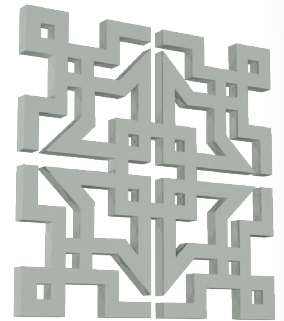
Motif - 2



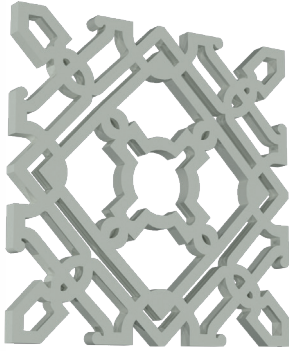
Motif - 3



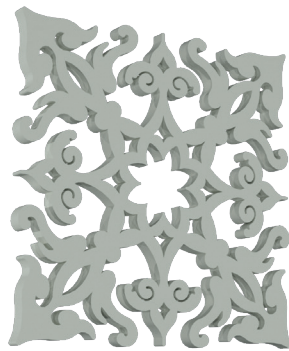
Motif - 4



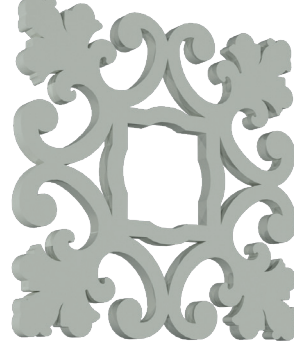
Motif - 5



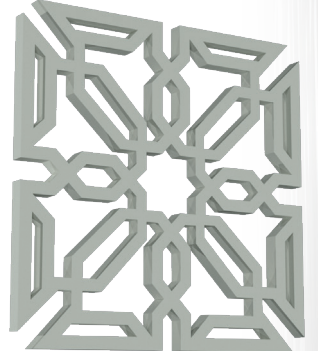
Motif - 6



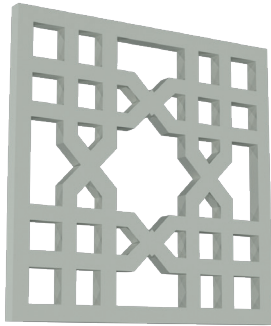
Motif - 7



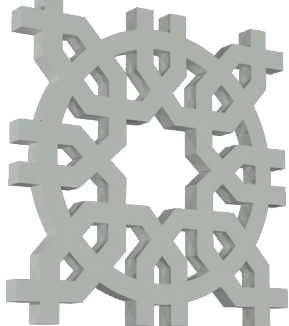
Motif - 8



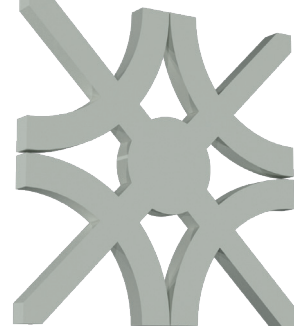
Motif - 9



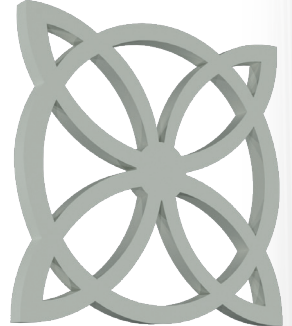
Motif - 10



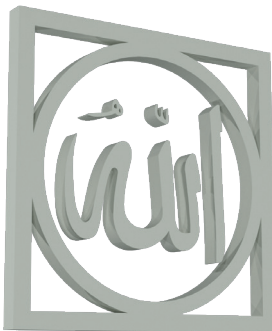
Motif - 11



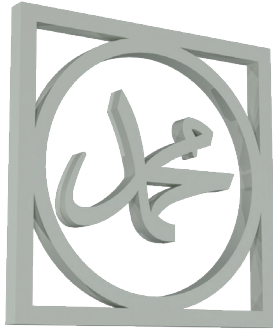
Motif - 12



Motif - 13



Motif - 14



Motif - 15



Motif - 16



Desen ve Motifler farklı ölçülerde üretilebilir. Talep edeceğiniz farklı iki boyutlu modeller de üretilebilir.

Motif - 17



Motif - 18



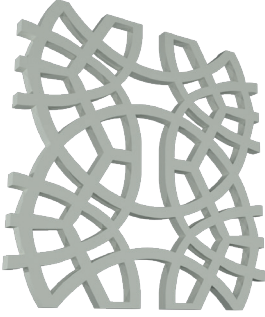
Motif - 19



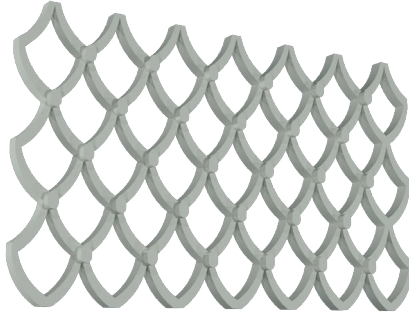
Motif - 20



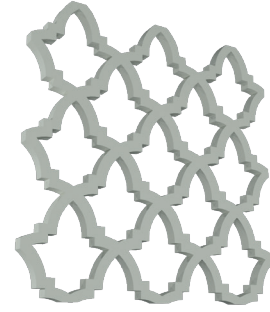
Motif - 21



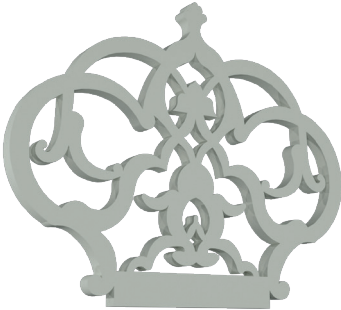
Motif - 22



Motif - 23



Motif - 24



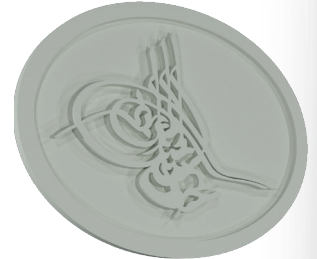
Motif - 25



Motif - 26



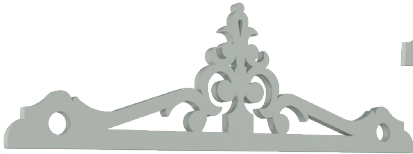
Motif - 27



Motif - 29



Motif - 28



Motif - 30



Desen ve Motifler farklı ölçülerde üretilebilir. Talep edeceğiniz farklı iki boyutlu modeller de üretilebilir.